

# NH1 250A/440V DC



## Specifications

ETI Code	004110231
Description	NH1 250A/440V DC
Class name	Fuse link
Rated current (A)	250
Type	NH
Size	NH1
Characteristics	gR
Rated DC voltage (V)	440
Indicator	Top fuse status indicator
Breaking capacity DC (kA)	50
Standards	IEC 60269-2
L/R (ms)	20
Application	Fuse-link for DC application.
efuse	1

[Online product page](#) 

## Other documentation



[Technical data catalogue](#)

[3D Model](#)

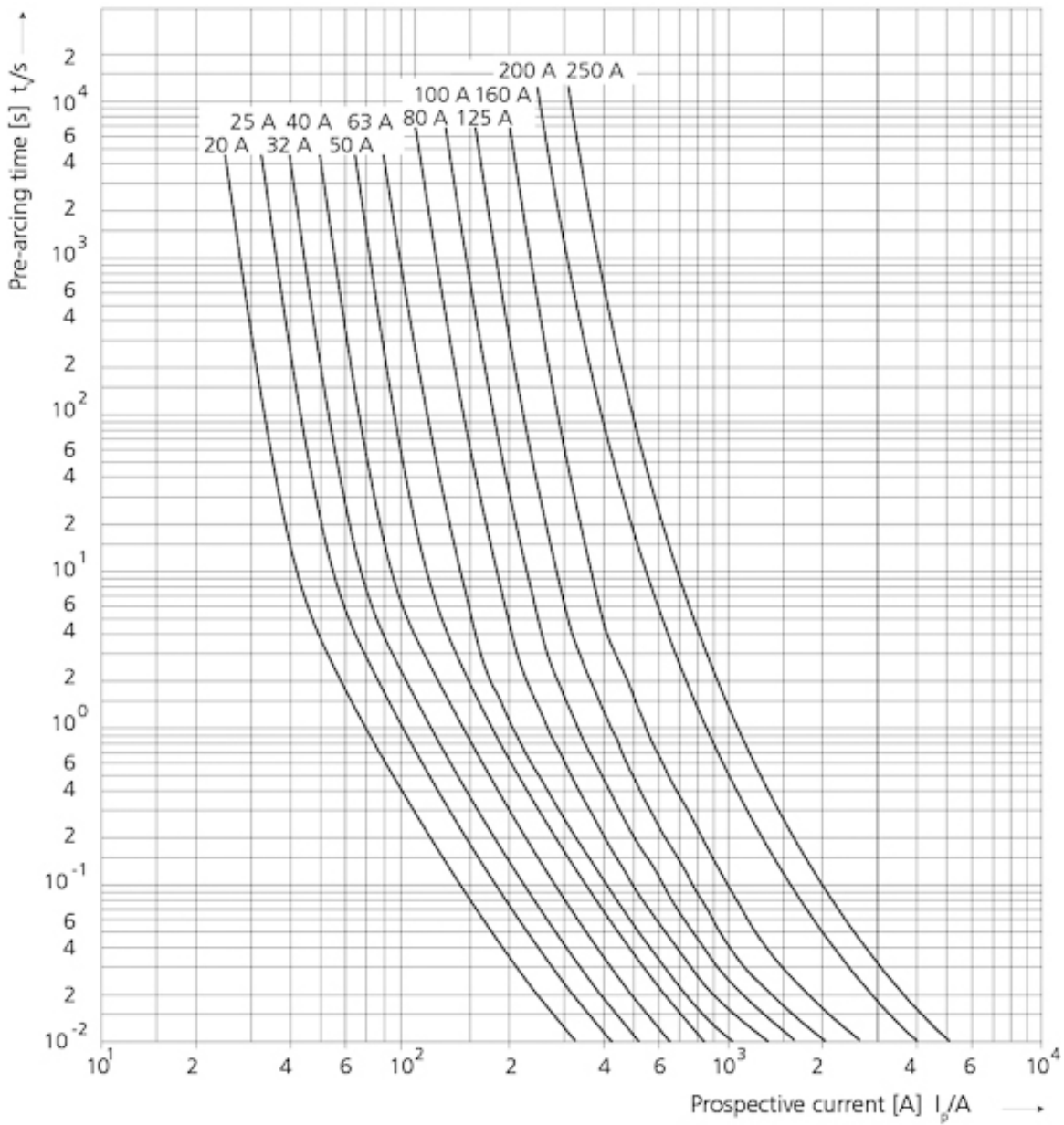
[Instruction manual](#)

## ETIM international classification

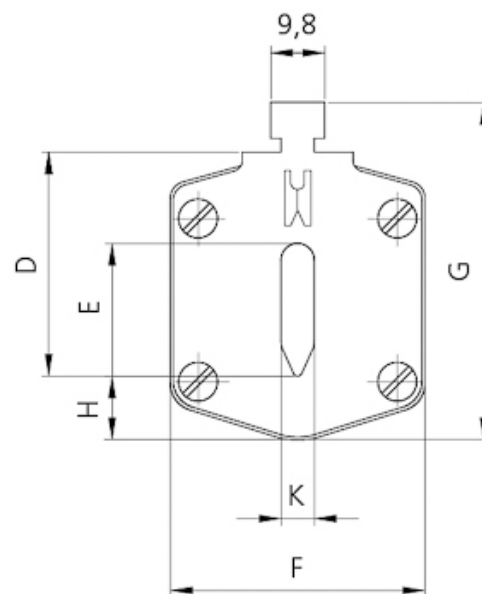
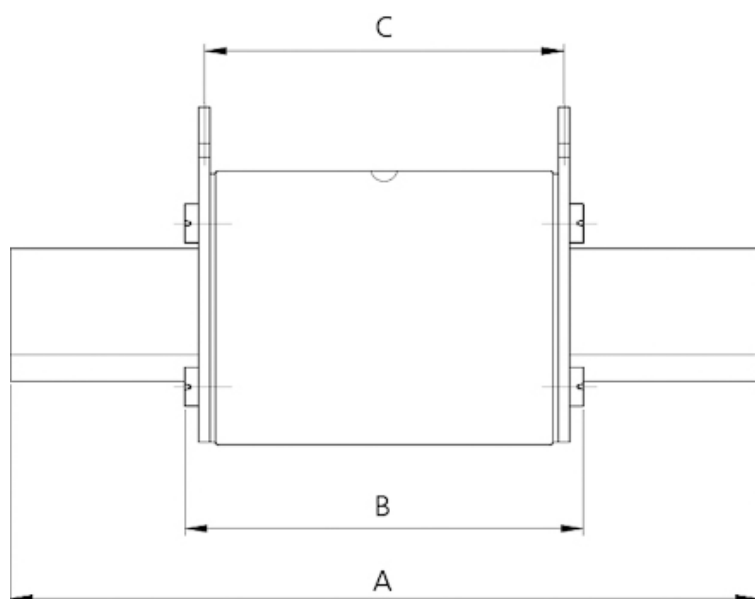
Classification	EC000055
Class name	Low Voltage HRC fuse
Construction size	NH1
Rated current	250
Rated voltage	440
Voltage type	DC
Rated switching capacity	50
Utilization category	gR (general purpose semiconductor protection)
Type of fuse status indicator	Top fuse status indicator
Insulated metal gripping lugs (IMGL)	

# Characteristics

Time-current characteristics



## Dimension drawing



type	dimensions [mm]								
	A	B	C	D	E	F	G	H	K
00 C	79	53	47	35	15	21	52	7,5	6
00	79	53	47	35	15	28	56	12	6
1 C	135	68	65	40	15	28	61	12	6
1	135	72	65	40	20	46	65	14	6