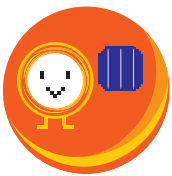


# SS-DM SERIES

Mono Crystalline Solar Panels 310-325 W /  
72 Cells / 3 Bus Bar

## High Efficiency, High Performance, Customer Satisfaction

Shinsung Solar Energy satisfies various needs of the customers based on the production of the world's best high efficiency solar modules and by pursuing a product specialization strategy. The company has the most diverse product lines in the industry, and plans to focus on the development of diverse and highly specialized products.



High quality,  
high power  
Cell efficiency above  
19%  
Module efficiency of  
17.02%



Guarantee products  
for 10 years  
Guarantee efficiency  
for 25 years



-40~+85°C in any  
environment to  
ensure  
high power output



Received 0%  
in efficiency  
reduction ratio  
of the test



Passed the  
mechanical load  
test of  
550kgf/m<sup>2</sup>(5400Pa)  
according to IEC  
61215



Product liability  
insurance  
Financial injury  
insurance

  
shinsung  
SOLAR ENERGY



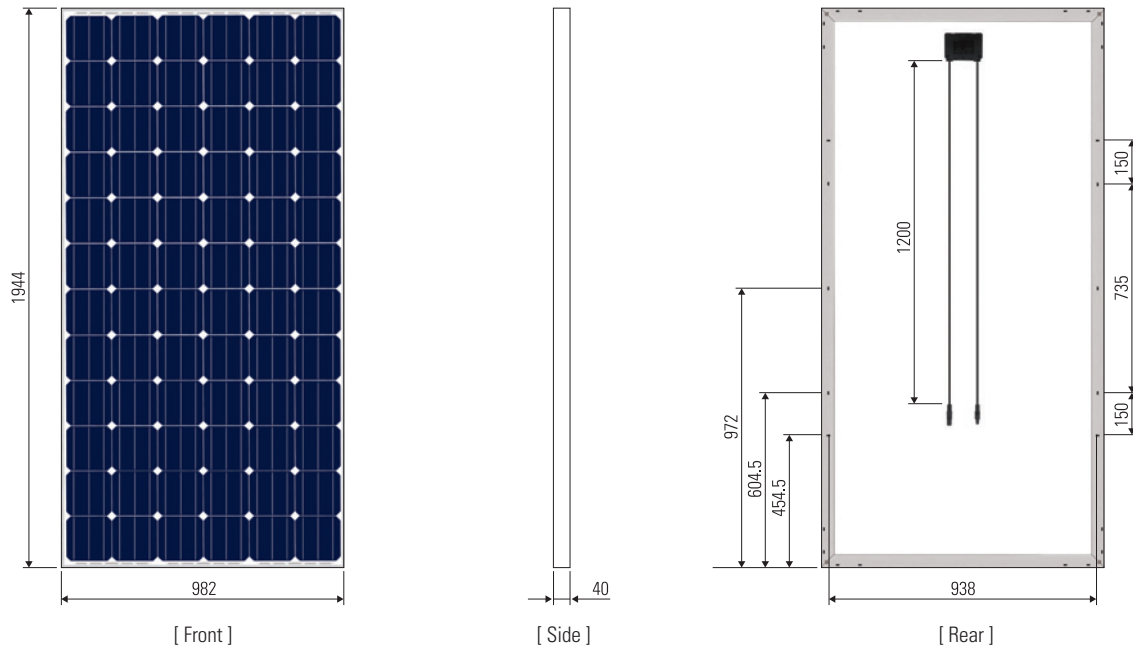
# SS-DM SERIES

## Mono Crystalline Solar Panels 310-325 W / 72 Cells / 3 Bus Bar

Copy Right April 2015 Shinsung Solar Energy  
Caution: All right reserved. Information may be changed without prior notice.

### Dimension

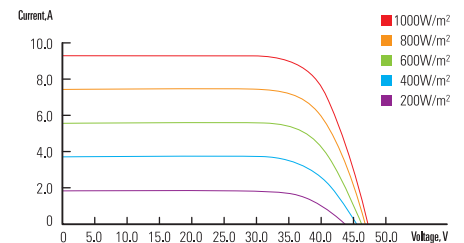
[ unit : mm ]



Item	SS-DM310	SS-DM315	SS-DM320	SS-DM325
Peak Power(Wp)	310	315	320	325
Open Circuit Voltage(V)	45.7	45.8	45.9	46.0
Short Circuit Current(A)	8.92	9.05	9.17	9.29
Voltage at Pmax(V)	36.6	36.7	36.8	36.9
Current at Pmax(A)	8.47	8.59	8.70	8.81
Efficiency(%)	16.23	16.50	16.76	17.02
Dimension(mm)	982 x 1,944 x 40			
Weight(Kg)	22			

※ All data is tested under STC(Standard Test Conditions). Above data may be changed without prior notice.  
• Peak power tolerance 0~+3.0% • Please inquire of us about correct data by each Certificate Holder.

### I-V Curve



### Mechanical Characteristics

Solar Cells	72 Cells (156x156mm)
Front Glass	Low Iron Tempered Glass
Junction Box	IP 67, 3 Bypass Diode
Output Cable	4mm <sup>2</sup> Cable, MC 4 (Compatible) Type
Frame	AL Alloy Type (Anodized)

### Loading Quantity (unit : pcs)

	60 Cells	72 Cells
<b>Domestic</b>		
2.5-ton	90	50
5-ton	210	150
5-ton+	240	175
11-ton	300	225
<b>Export</b>		
20ft	276	230
40ft	756(Dry) 812(H/Q)	624(Dry) 672(H/Q)

### Temperature Coefficient (Cell)

NOCT	45.4(°C)
$\alpha \Delta$ ISC	0.07(%/K)
$\beta \Delta$ VOC	-0.36(%/K)
$\gamma \Delta$ Pmax	-0.38(%/K)

### Tested Operation Conditions

Max Load	550kgf/m <sup>2</sup> (5400Pa)
Impact Resistance	25mm, 23m/s
Operating Temperature	-40 ~ +85°C

### Safety Ratings & Warranties

Fire Safety Classification	Class "C"
Salt-mist Corrosion Test	Tested
Visible Light Reflected	4.20%~4.30% For more information, please contact us.
Warranty	10 Years limited Product Warranty
	10 Years limited Power Warranty : 90%
	25 Years limited Power Warranty : 80%
Certifications	UL 1703, CEC, IEC 61215 Safety Tested IEC 61730



فروشگاه اروین سولار  
تلفن : ۰۲۱-۳۳۹۹۹۰۵۶ : همت بلند  
۰۲۱-۳۳۹۹۹۰۷۲  
www.ervinsolar.ir  
ervinsolar@hotmail.com

